

Northern Cheyenne Integrated Solid Waste Management Plan

Approved

_____, 2011

TABLE OF CONTENTS

EXECUTIVE SUMMARY 1

PART 1—Background and Context..... 2

 a. General Background 2

 b. Tribal Solid Waste Management Goals, Objectives, and Strategies..... 3

PART 2—SOLID WASTE MANAGEMENT PLANNING 4

 a. Identification of Open Dumps & Plan for Closure. 4

 b. Collection, Transport, Handling and Treatment of Solid Waste..... 5

 c. Volume & Composition of Solid Waste..... 6

 d. Responsibilities of Tribal Agencies & Funding Agencies..... 7

 e. Regulatory Implementation of Solid Waste Program..... 9

 f. Review of Contracts for Open Dumps. 12

 g. Development of On-Reservation MSWLFs. 12

 h. Evaluation of Disposal Practices. 13

 i. Additional Solid Waste Program Components. 15

 1. Recycling 15

 2. Waste Diversion..... 15

 3. Public Hearings on Solid Waste Management..... 15

Appendix A: Approving Resolution 17

Appendix B: SOLID AND HAZARDOUS WASTE COMPLAINT/INCIDENT REPORT FORM..... 19

Appendix C: Description Community Solid Waste Activities 21

Appendix D: Solid Waste Management Online Training Resources 22

Appendix E: List of Known and Suspected Open Dumps on the Reservation 223

LIST OF FIGURES

Figure 1. NC Organization Chart 8

Figure 2. SW Implementation 2011-2016..... 11

Figure 3. Timeline for Phase 1 Solid Waste Program Development 2011-2012..... 11

LIST OF TABLES

Table 1.NCT Community Classification and Service..... 2
Table 2. Estimated Composition of Solid Waste Generated on NCT Reservation 6
Table 3. NCT Programs & Roles in Solid Waste Management 8

DRAFT

EXECUTIVE SUMMARY

This Integrated Solid Waste Management Plan (ISWMP) outlines how the Northern Cheyenne Tribe (NCT) will reduce, manage, and dispose of solid waste on the NCT Reservation. This plan is adopted pursuant to Section 3.1 of the NCT Solid Waste Code,¹ which requires the Director of the Tribe's Environmental Protection Department (EPD), in consultation with the Director of the Tribe's Solid Waste Department (SWD), to "develop and periodically review and revise the Tribe's Integrated Solid Waste Management Plan" In accordance with EPA recommendations and the requirements of Section 3.1 of the NCT Solid Waste Code, this plan includes the following elements:

- Description of the Northern Cheyenne Reservation and service areas for solid waste services.
- Description of the NCT's solid waste program structure administration;
- Description of the NCT's current and proposed waste management practices;
- Description of the funding and sustainability and the long-term goals of the NCT solid waste program; and
- Demonstration of approval by the Tribal Council by way of Resolution.

Part 1 of this ISWMP provides context necessary for understanding solid waste management issues on the Reservation. It describes the general character of the Reservation; the existing organizational structure for solid waste management on the Reservation; and the Tribes goals, objectives, and specific strategies for improving solid waste management practices.

Part 2 of this ISWMP addresses the solid waste management issues required by Section 3-1(a) of the Tribe's Solid Waste Code. Specifically, it summarizes the Tribe's plans for identifying and closing open dumps on the Reservation; describes the current situation on the Reservation with respect to the collection, transport, handling, and treatment of solid waste; estimates of the volume and composition of solid waste generated on the Reservation; describes the responsibilities of tribal agencies and funding agencies with respect to solid waste management; describes regulatory needs for implementing the Tribe's Solid Waste Program; reviews existing contracts for closing of open dumps; evaluates the

¹ The Northern Cheyenne Solid Waste Code is available on line at:
<http://www.cheyennation.com/solidwaste.html>.

potential for siting of on-Reservation MSWLFs; evaluates the current disposal practices on the Reservation; and describes additional solid waste management strategies the Tribe has elected to pursue.

PART 1—Background and Context

a. General Background

The Northern Cheyenne Reservation is located in southeastern Montana and encompasses 447,000 acres. Over 97% of this acreage is trust land, either Tribal or allotted, with only 7,828 acres of fee land. Less than one percent of the total acreage is not Northern Cheyenne-owned (tribal or individual). The Tribal headquarters for the Northern Cheyenne Tribe is located in Lama Deer Montana. Population centers on the reservation include Lama Deer, Busby, Muddy Cluster, Ashland, and Birney Village. The total population for the Reservation is approximately 6,400. Around 4,000 of the residents are enrolled tribal members. There are approximately 1,328 homes on the Reservation.² Of these homes, 537 are classified as rural based on the 911 addressing classification of 2010 and 726 homes are connected to community water and sewer services provided by the NCT.³ Table 1 describes the number of homes served in each community.

**Table 1.
NCT Community Classification and Service**

Community	Rural Classification	Community Water & Sewer
Busby	85	102
Birney	41	22
Ashland	87	30
Lama Deer	214	410
Muddy Cluster	66	71
Commercial	-	91
Kirby	44	-
Total	537	71

² 2000 Census

³ Information provided by A/R Clerk NCT, Ethelyn Shoulderblade. September 2010

Current solid waste services on the Reservation are described in more detail below. They generally include limited curbside pick-up, transfer station site management, some recycling activities, open dump management and inventory activities, community clean-up activities, hazardous waste disposal oversight, and other activities as scheduled by the solid waste staff (such as managing junk cars, tires, prescription drugs, batteries, oil waste pick-up).

In conjunction with the NCT Brownfield Program, the NCT conducted community assessments to determine waste disposal practices on the Reservation. The assessment also included questions about recycling practices, community clean-up projects, and implementation of solid waste activities. 188 community members responded to the 24-question survey either during community meetings or online. The results of the assessment were shared with applicable Tribal Programs and the Solid Waste Advisory Committee. Information resulting from the community assessments has been integrated into this ISWMP and serves as a basis for the long-term planning for solid waste services provided by the NCT. A full report of the assessment is included in *Appendix C*.

b. Tribal Solid Waste Management Goals, Objectives, and Strategies

The Tribe has five general goals for solid waste management on the reservation:

1. Protection of human health and the environment;
2. Compliance with Federal requirements;
3. Reduction of the overall costs of solid waste management;
4. Utilizing solid waste management for economic development purposes; and
5. Improving solid waste collection service to the residents of the Northern Cheyenne Reservation.

The Tribe has established the following objectives that will help the Tribe meet the goals listed above:

1. Reducing the amount of waste generated for disposal;
2. Promoting methods of solid waste management that are alternatives to landfill disposal;
3. Minimizing illegal dumping and open burning;
4. Increasing public awareness of proper solid waste management;
5. Increasing the number of tribal members employed;
6. Increasing the level of tribal control over solid waste collection and hauling;

7. Improving the level of service provided to Reservation residents and businesses; and
8. Ensuring that solid waste management services are affordable and available to all residents.

The specific strategies the Tribe intends to take to accomplish the Tribe’s solid waste goals and objectives include:

1. Providing 100% curbside services to all residents and service areas;
2. Providing recycling to residents at curbside, to local businesses, to schools, and for community events;
3. Closing 100% of open dumps;
4. Developing access to adequate landfills to support community needs;
5. Using alternative energy technology and resources in Program; and
6. Implementing a sustainable solid waste program that is operated 100% by the NCT for positive economic benefit.

PART 2—SOLID WASTE MANAGEMENT PLANNING

This ISWMP is prepared pursuant to Section 3-1 of the NCT Solid Waste Code, which requires the EPD Director, in consultation with the SWD Director, to develop and periodically review and revise the Tribe’s ISWMP. Tribal law requires this ISWMP to contain the following discussion and analysis:⁴

a. Identification of Open Dumps & Plan for Closure.⁵

An “open dump” is defined as any site on the Reservation where solid waste has been disposed of that is not a sanitary landfill authorized under the Tribe’s Solid Waste Code and federal regulations located at 40 CFR 14 Parts 257 or 258.⁶ Open dumps include land disposal sites where solid waste is disposed of in a manner that does not protect the environment, is susceptible to open burning, and is exposed to the elements, disease vectors, and scavengers.

Pursuant to Sections 2-2(c) and 3-1(a)(1) of the Tribe’s Solid Waste Code, and in accordance with the SWDA and Part 258 Criteria, the EPD will identify open dumps within the Reservation and seek funding for clean-up and closing of all open dumps once identified. Open dumps may be identified by

⁴ NCT Solid Waste Code §§ 3-1(a)(1)-(8)

⁵ Section 3-1(a)(1) of the NCT Solid Waste Code requires this ISWMP to “[i]dentify and plan for the closing of all open dumps within the Reservation, subject to available funding, in accordance with the SWDA and Part 258 Criteria.”

⁶ NCT Solid Waste Code § 1-2(nn).

Tribal staff or community members. Once an open dump is identified, members of the Tribe's SWD will use Geographic Positioning Systems (GPS) to record its coordinates. To the extent possible, SWD staff will assess the site and record an inventory of the dump. If the SWD determines that the open dump site has the potential to threaten life or human health, cultural sites, or otherwise pose harm to the NCT or its members, staff will immediately report the open dump to the EPD and other appropriate representatives for further action.

SWD staff electronically store open dump information and work in conjunction with community members and tribal, state, and federal programs to identify funding and close open dump locations. SWD staff will continue to provide public outreach and education using signs, posters, and television announcements in the community to prevent open dumping and raise public awareness of open dumps. SWD staff will work in coordinate with the EPD and EPA to develop timely solutions for closing open dumps.

Appendix E identifies and describes known and suspected open dumps on the Reservation.

b. Collection, Transport, Handling and Treatment of Solid Waste.⁷

The NCT seeks to provide comprehensive solid waste services on the Reservation through collection, transport, handling and treatment of solid waste. The NCT currently provides curbside solid waste pick-up to 247 residents living in the communities of Lame Deer, Ashland, and Birney. Residents who do not have access to curbside services must transfer their waste to canister sites (transfer locations) located in Busby, Birney, and Muddy Cluster or haul their waste to the closest landfills (Miles City, Hardin MT, or Sheridan WY). In the future, the SWD will provide all residents of the Reservation with curbside pick-up. The SWD will coordinate with existing programs and communities to establish a

⁷ Section 3-1(a)(2) of the Tribe's Solid Waste Code requires this ISWMP to "[f]ormulate Tribal policies for the collection, transportation, handling, treatment, and disposal of solid waste on the Reservation" including "[t]o the extent feasible . . . a program for Reservation curbside solid waste pickup, a program for recycling of solid wastes, and a program for the disposal of household hazardous wastes other than in an MSWLF on the Reservation."

schedule and arrange for the collection of solid waste on a timely basis or as needed but not less than once every seven days in accordance with Section 10-3(a) of the NCT Solid Waste Code.

The NCT general budget currently pays for all solid waste services on the Reservation (including curbside pick-up, transfer site management, and other waste removal activities). In the future, residents will pay a monthly service fee to the NCT for such solid waste services. Service fees for transfer, recycling, or other special services shall be collected as prescribed by the SWD Director. Fees established to cover solid waste management activities will be limited so as to not encourage unlawful solid waste disposal practices. Non-payment of solid waste fees, after 60-days for collection, is a violation of the NCT Solid Waste Code and may result in action being taken by the Tribe's Compliance Officer pursuant to Chapter 11 of the NCT Solid Waste Code.⁸ Action may include the discontinuation of other utilities provided by the NCT and legal action in the appropriate forum. NCT shall provide a written notification of this proposed action to the alleged violator before any services are discontinued or fines assessed.

c. Volume & Composition of Solid Waste.⁹

In 1996 and again in 2005 a solid waste inventory and assessment was conducted by consultants hired by the NCT. According to both reviews, the NCT generated approximately 250 tons of waste per month that was sent to designated transfer stations,¹⁰ indicating that the total amount of solid waste generated on the Reservation has remained relatively constant. The estimated composition of solid waste generated on the Reservation (by volume measured in gallons) is listed in Table 2.

Table2
Estimated Composition of Solid Waste Generated on NCT Reservation

⁸ NCT Solid Waste Code § 10-8(b).

⁹ Section 3-1(a)(3) of the NCT Solid Waste Code requires this ISWMP to "[e]stimate the volume and composition of all solid waste which is generated on the Reservation and the volume and composition of solid waste from sources outside the Reservation that may be disposed of in any MSWLF on the Reservation pursuant to any intergovernmental agreement that the Tribal Council may authorize."

¹⁰ This survey did not include estimates of waste deposited in open dumps or burned, and thus underestimates the total amount of waste generated on the Reservation.

Type of Waste	Volume (gallons)	Percentage of Total Waste Stream
Paper	1,452	43.10%
Plastics	1,172	34.79%
Food	330	9.80%
Organics	123	3.65%
Metals	89	2.64%
Medical	76	2.26%
Fabric	71	2.11%
Glass	25	0.74%
Other Household Waste	23	0.68%
Inorganics	8	0.24%
Total	3,369	100.00%

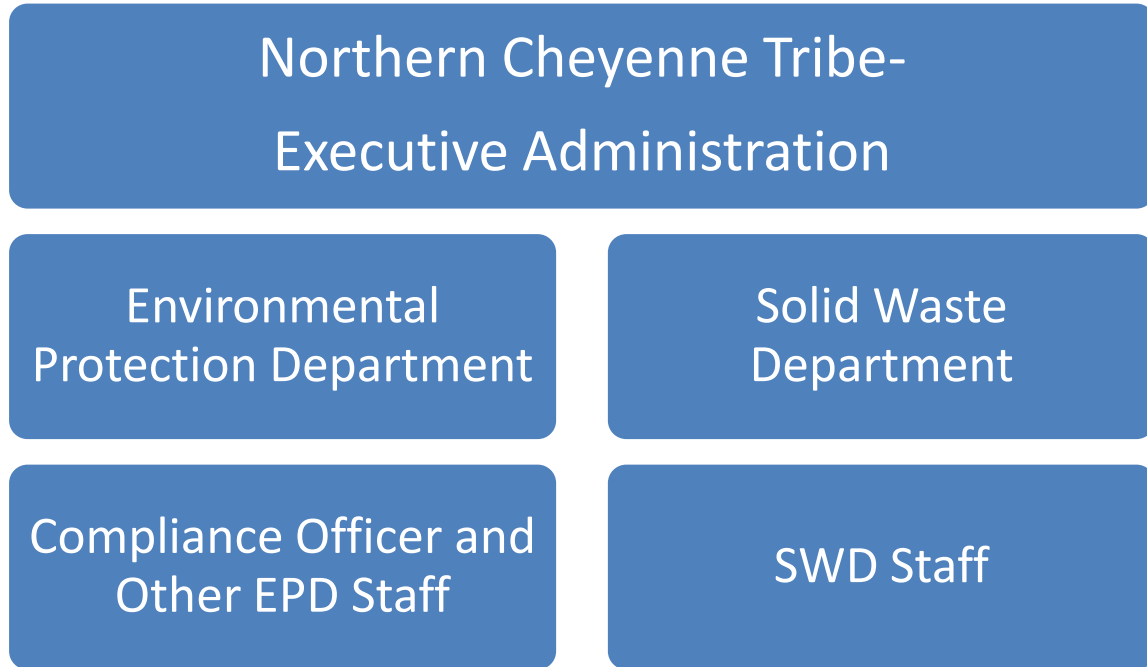
In addition, the 2005 inventory detected a total of 88 white goods and 1043 tires disposed of that year. Based on this information, the NCT will prioritize recycling to reduce paper, plastics, metals, and glass.

d. Responsibilities of Tribal Agencies & Funding Agencies.¹¹

The NCT oversees its Tribal Solid Waste Program pursuant to the NCT Solid Waste Code the Tribe adopted in 2010. The Solid Waste Program operates in under the Tribe’s EPD, SWD, and multiple other Tribal programs on the Reservation. The NCT is in the process of expanding its Solid Waste Program to include a full-time SWD Director, a Compliance Officer, two full-time solid waste truck drivers, one administrative assistant, and maintenance staff as necessitated by the operations. The development of the Tribe’s SWD, newly established under the 2010 Solid Waste Code, will rely on the availability of resources. Figure 1 highlights the NCT organization structure as it relates to the solid waste management.

¹¹ Section 3-1(a)(4) of the NCT Solid Waste Code requires this ISWMP to “[i]dentify the responsibilities of any other Tribal agencies and entities involved in the implementation of the Tribe's solid disposal waste program and the distribution of Federal or State funds to the Tribal authorities responsible for development and implementation of the Tribe's solid waste disposal program.”

**Figure 1
NC Organization Chart**



Beyond the Tribal programs directly responsible for managing solid waste, there are multiple programs within the NCT that will benefit from increased funding and participation in the implementation of SW activities. The table below identifies existing programs, potential roles, and contact information. At a minimum all programs represented in the table below will participate in the NCT Solid Waste Advisory Board.

**Table 3
NCT Programs & Roles in Solid Waste Management**

Program	Role	Contact
Brownfields	Assist with the assessment of open dumps. Develop strategic plan for management of clean-up, education, and funding. Compliance and incident management. Integrate existing efforts through USDA, MAP, and others to compliment NCT SW Goals.	Jolisa Bahr-Whiteface, Brownfields Coordinator, NCT
Water Quality	Document and share information about water quality impacted by SW on the Reservation.	Joe Walksalong, Jr., Water Quality Administrator, NCT
Air Quality	Document impact of SW activities on air quality. Report information on open burning/barrel burning to the SW department.	Jay Littlewolf, Air Quality Administrator, NCT
Underground	Integrate existing clean-up efforts with SW program. Share	Sherrel Fisher,

Storage Tanks/LUST	information and resources about UST/LUSTS with SW staff.	LUST/UST Coordinator, NCT
Wetlands	Determine impacts to wetlands from SW disposal, open dumping, and or other SW activities.	Joe Limberhand, Wetlands Technician, NCT
Housing Authority	Share information about SW needs of NCTHA occupants. Report SW to Director/Staff. Provide funding when applicable for SW pickup and disposal.	Lafe Haugen, Director, NCT
Local Businesses	Participate in recycling activities, clean-up days, and pay for disposal of SW generated by business.	Varied.
Chief Dull Knife College	Link students/community with SW programs and initiatives.	Dr. Richard Littlebear, President, CDKC
Office of Environmental Health	Share information on health impacts from SW with staff. Participate in advisory board, clean-up days, and recycling initiatives. Assist with proper disposal of medical waste.	Albert Larance, Director, NCT
Natural Resource Department	Document impacts to Tribe's natural resources from SW to Director/Staff. Share resources and participate in advisory board, clean-up days, and recycling initiatives.	Allen Clubfoot, Director, NCT
Solid Waste	Assist in assessing and documenting open dumps. Supervise community members during weekly clean-up. Assist with planning SW activities, open dump response.	Arnie LaFranier, Solid Waste Coordinator, NCT
Disaster Emergency Services	First responders for hazardous waste response. SW Advisory Board member.	Ed Joiner, DES Coordinator, NCT

e. Regulatory Implementation of Solid Waste Program.¹²

The Tribe's EPD Director is responsible for overseeing the implementation and enforcement of the Tribe's Solid Waste Program. The SWD Director will work in conjunction with the EPD Director as needed. A Compliance Officer position will be created pursuant to Section 2-2 of the NCT Solid Waste Code, who will work under the EPD Director and report information to other departments and the Council on regulatory systems required to implement the Solid Waste program and enforce the Solid Waste Code. The Compliance Officer will also provide support to existing Environmental Protection Programs, including, but not limited to: Brownfields, LUST/UST, Water, Air, Wetlands, and Solid Waste.

Until such time as funding is secured to support the Compliance Officer position, the enforcement and

¹² Section 3-1(a)(5) of the NCT Solid Waste Code requires this ISWMP to "[r]eview and advise the Council on Tribal regulatory systems necessary to fully implement the Tribe's solid waste disposal program and enforce the Code and rules or regulations promulgated thereunder."

compliance of the SW Code is the responsibility of the EPD Director and multiple Tribal program staff working in conjunction with the EPD Director and Council.

The NCT has developed a five-phase process for implementation of the SW program on the Reservation. Phase 1, which began in 2011 and will continue through 2012, involves the expansion of the existing solid waste program, including adoption of the Tribe's Solid Waste Code in 2010 and completion of this ISWMP. In addition, during Phase 1, the Tribe will work to promote implementation of the new Solid Waste Code and this ISWMP, seek funding through USDA grants to purchase new solid waste equipment such as dump trucks and canisters for the Solid Waste Program, establish a maintenance process, and review existing solid waste needs and services as documented by Solid Waste Advisory Board and EPD Director. During Phase 2, which will begin in 2012 and extend through 2013, NCT will hire a SWD Director and a Compliance Officer (contingent on funding), and will begin to build a solid waste infrastructure. During Phase 3, which will begin in 2013 and extend until 2014, the Tribe will monitor needs and community input for the possible siting of one or more MSWLFs on the Reservation. During Phase 4, from 2014 through 2015, the Tribe will work to identify training needs for further implementing the Solid Waste Program. During Phase 5, from 2015 through 2016, the Tribe will work to offer comprehensive training for NCT and other Tribes in the areas of solid waste management and alternative solid waste disposal methods. This process is diagramed in Figure 2, below.

Figure 2. SW Implementation 2011-2016

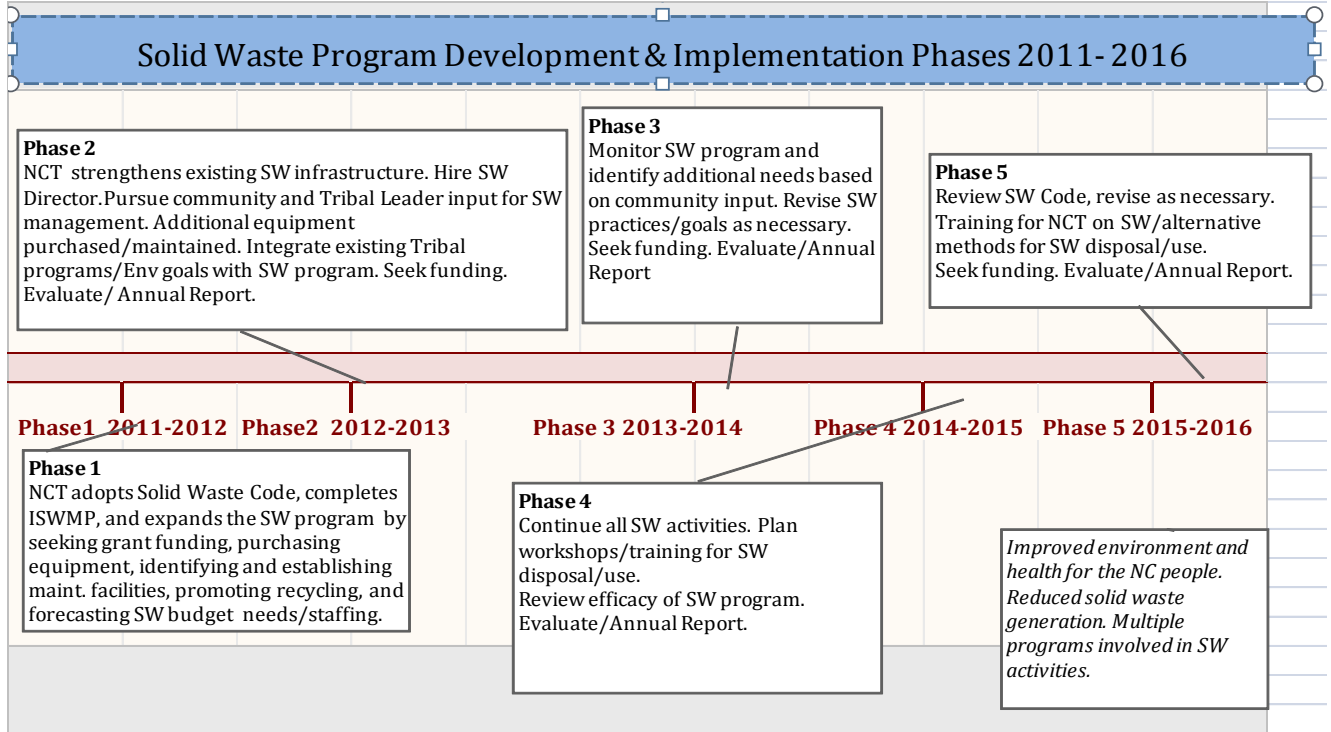
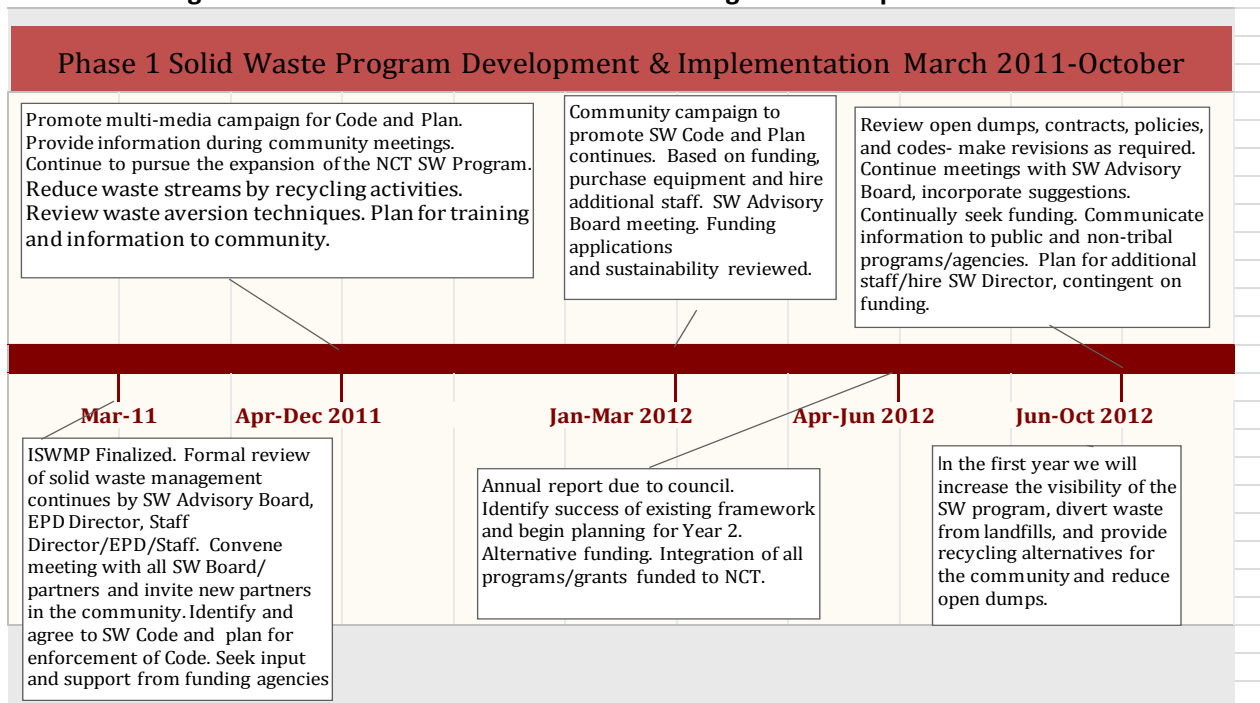


Figure 3. Timeline for Phase 1 Solid Waste Program Development 2011-2012



Throughout these implementation phases, the Tribe will evaluate what regulations are necessary to improve solid waste management on the Reservation. These may include the adoption of

solid waste collection and disposal fees (§ 10-8), regulations on burning solid wastes (§ 4-3), Sanitation Department regulations governing disposal of animal carcasses (§ 4-9), regulations governing collection and disposal of household hazardous waste (§ 4-17).

The Tribe is also engaged in long-term planning to anticipate solid waste management needs as the Northern Cheyenne community continues to grow and will take an active role in solid waste management by continually evaluating the effectiveness and approach of existing programs. The following recommendations may help future efforts to manage solid waste effectively expansion of Solid Waste Advisory Committee to include additional programs and agency personnel; increased recycling programs, incentives for recycling, and alternative reuse models promoted; and long-term strategic solid waste plan that fully assesses the increasing costs of managing and transporting waste from community to landfill.

f. Review of Contracts for Open Dumps.¹³

The EPD Director will assist the SWD Director with review and implementation of contracts for the closing of identified open dumps on the Reservation. The Directors will follow NCT protocols for bid review and awards. The EPD Director may assign EPD staff to work in conjunction with the SWD staff to ensure adequate reporting and closure of open dumps.

g. Development of On-Reservation MSWLFs.¹⁴

As of the date of this ISWMP, there are no Municipal Solid Waste Landfills (MSWLFs) on the Reservation. Any party wishing to construct or operate an MSWLF on the Reservation must obtain a permit pursuant Section 5-2 of the NCT Solid Waste Code and comply with federal requirements. Any MSWLF operating on the Reservation must comply with all the requirements of the NCT Solid Waste

¹³ Section 3-1(a)(6) of the NCT Solid Waste Code requires this ISWMP to include a “[r]eview[of] any contracts or other arrangements for the closing of open dumps on the Reservation and the removal of solid waste disposed of at open dumps on the Reservation and assess the costs of fulfilling such contracts or arrangements.”

¹⁴ Section 3-1(a)(7) of the NCT Solid Waste Code requires this ISWMP to “[i]dentify preferred locations on the Reservation for the establishment of new MSWLFs.”

Code, including disposal restrictions in Chapter 4 of the NCT Solid Waste Code, and must also comply with all applicable federal laws and regulations. All design and operation plans for MSWLFs must be certified by a professional engineer and define how the MSWLF will meet the requirements of the Code and 40 CFR Part 258 relating to site location, site design, performance, operating standards, groundwater monitoring, closure, post-closure, and financial assurance.

There are currently no designated preferred locations on the Reservation for the siting of an MSWLF. Under the direction of the SWD Director and EPD Director, assigned solid waste staff are authorized to identify potential future landfill sites on the Reservation, including construction and demolition landfill sites (C and D sites). If preferred locations are identified, they will be selected based on community input and impact, the geographic location, the number of people to be served by the site, the life expectancy of the facility, the geological formation, aquifer characteristics, and groundwater elevations below the site and reliable data on existing groundwater quality within 2,000 feet of the site, source and characteristics of cover material to be used, the topography of the site and drainage patterns, and the location of the 100-year flood plain in relation to the site.

h. Evaluation of Disposal Practices.¹⁵

The NCT's current waste management practices include curbside services for 247 residents in three communities (Ashland, Birney, and Lame Deer). This curbside pickup is currently conducted pursuant to contract by Allied Waste. The NCT also maintains transfer sites in Birney, Busby, and Muddy Cluster. Allied Waste is contracted to empty the transfer sites at Busby and Birney once per week, and the Muddy Cluster transfer site twice per week.

¹⁵ Section 3-1(a)(8) of the NCT Solid Waste Code requires this ISWMP to "[e]valuate how solid waste will be disposed of on or off the Reservation in compliance with the Part 258 Criteria, including an assessment of costs for constructing and operating MSWLFs and transfer stations on the Reservation and an assessment of costs for the collection and transportation of solid waste on or off the Reservation."

Pursuant to the NCT Solid Waste Code, the NCT Environmental Protection Department (EPD) shares responsibilities with the Tribe's Solid Waste Department (SWD) for solid waste management. At least one program staff works to assess and record open dumps and illegal dumping.

At least once a year, the all programs under the NCT participate in a week long community clean-up event. Historically, the Tribe has scheduled the clean-up in the spring of each year. Tribal programs donate supplies, food, and water for the event. During this time, Tribal program employees volunteer to clean-up specific areas of the Reservation. Individuals carry large trash bags and wear gloves while they walk through neighborhoods, along highways, or other areas to clean-up solid waste (including cars, white goods, tires, and general household waste). The importance of this event cannot be discounted as this event encourages multi-program and community participation in creating healthy communities for the NC people.

For the 2011 fiscal year, \$400,000 from the NCT general budget is set aside for solid waste contracts with Allied Waste. Much of the costs associated with managing solid waste on the Reservation come from the Tribe's general budget—NCT pays 100% of all collection services for the NCT. In order to offset solid waste costs, the NCT and the EPD Director continually seek additional funding through multiple federal, state, and local sources. Current funding for the Tribe's Solid Waste Program is provided primarily by the NCT, the EPA, and the USDA. Costs associated with managing solid waste on the Reservation increase every year.

The NCT plans to phase out the use of contracted solid waste collection services and develop a Tribally-run Solid Waste Program that includes curbside pick-up, recycling, and alternative solid waste management services. The NCT may identify potential future options for non-Reservation disposal and, in the event that an MSWLF location has not been identified, the Directors and staff will determine the implementation plan, providing community notice and information about new services.

i. Additional Solid Waste Program Components.¹⁶

1. Recycling

Results of the 2010 solid waste assessment found that the community wanted to recycling the following wastes: tin cans, aluminum cans, glass, plastics, paper, and cardboard. Of these respondents, 94% indicated they want to have recycling bins available at all Tribal buildings and offices and the majority also responded they would volunteer their time to help with recycling activities. The NCT will incorporate recycling options when available to the community residents. Review of the recycling program will occur on an annual basis or as needed. Additional recycling bins and items may be added at the discretion of the Solid Waste Director. The costs of recycling on the Reservation will be offset by an additional fees paid for by curbside customers.

2. Waste Diversion

NCT staff will review waste diversion practices for the NCT. Waste diversion is a practice of removing wastes from waste streams for a beneficial reuse or recycling. The NCT in conjunction with the SW Advisory Board will design guidelines for diversion practices in accordance with the SW Code. The goal of waste diversion is to reduce tipping fees associated with disposal at transfer sites and promote recycling.

3. Public Hearings on Solid Waste Management

The EPD Director and the SWD Director will routinely make public presentations regarding adoption of this ISWMP and implementation so the Solid Waste Program. Section 13-2(a) of the NCT Solid Waste Code requires public hearings when the Tribe proposes to adopt an ISWMP, issue regulations or guidance documents pursuant to the Solid Waste Code, approve any site locations for an MSWLF, issue permits for the construction or operation of an MSWLF, suspend groundwater monitoring requirements, assess corrective measures or selects remedies necessary under 40 C.F.R. §§ 258.26,

¹⁶Section 3-1(a)(9) of the NCT Solid Waste Code provides that an ISWMP may “include any other matters which are relevant to the Tribe's solid waste disposal program.”

258.57, approve any covenant not to sue or any settlement against a permittee under the Solid Waste Code, or when the EPD Director determines that another matter regarding solid waste management is appropriate for public review.

Pursuant to these public participation requirements, this ISWMP will be made widely available to the public within 30 days of presentation to the Council, and public hearings on this ISWMP will be held in the Reservation Districts within 60 days of presentation to allow interested parties to comment on this Plan, which shall go into effect as revised following these public hearings upon approval of the Council.

Appendix A: Approving Resolution

**TRIBAL COUNCIL OF THE NORTHERN CHEYENNE
NORTHERN CHEYENNE RESERVATION
LAME DEER, MONTANA**

RESOLUTION NO. DOI-___ (2011)

APPROVAL OF DRAFT INTEGRATED SOLID WASTE MANAGEMENT PLAN

WHEREAS, the Northern Cheyenne Tribal Council is the governing body of the Northern Cheyenne Tribe under the Constitution and Bylaws of the Tribe, as amended;

WHEREAS, under the Tribal Constitution, the Tribal Council has governing authority over the Northern Cheyenne Reservation, including without limitation authority to promulgate and enforce ordinances:

- to protect property, wildlife and natural resources of the Reservation;
- to regulate trade and property on the Reservation;
- to protect the health and general welfare of the Tribe; and
- to establish, delegate powers to, and regulate the procedures of Tribal boards, agencies, other instrumentalities, and officials, subject to the right of the Tribal Council to review actions taken under such delegated powers;

WHEREAS, the Tribal Council is greatly concerned about the existing and increasing volume and variety of solid waste (including hazardous waste) generated and disposed of on the Reservation (the "Reservation Solid Waste Problem");

WHEREAS, to address the Reservation Solid Waste Problem, the Tribal Council adopted the Northern Cheyenne Tribe Solid Waste Code in 2010;

WHEREAS, pursuant to Section 3-1(b) the Northern Cheyenne Tribe Solid Waste Code the Tribal Environmental Protection Department has presented the attached Integrated Solid Waste Management Plan ("ISWMP") to the Tribal Council for its consideration, made it widely available to all interested persons, held public hearings and accepted public comment on the ISWMP, and finalize the proposed plan following such public hearings;

WHEREAS, the Tribal Council is satisfied with the terms of the attached ISWMP, and has concluded that the Code should be adopted to address the Reservation Solid Waste Problem.

THEREFORE, BE IT RESOLVED AS FOLLOWS:

The attached ISWMP is hereby approved and adopted.

CERTIFICATION

PASSED, ADOPTED AND APPROVED by vote of the Northern Cheyenne Tribal Council by ____ votes for passage, ____ votes against passage, and ____ abstentions, this ____ day of _____, 2011.

Leroy A. Spang, President
Northern Cheyenne Tribe

ATTEST:

Melissa Lonebear, Tribal Secretary
Northern Cheyenne Tribe

Appendix B: SOLID AND HAZARDOUS WASTE COMPLAINT/INCIDENT REPORT FORM

Complaint Taken By:	Date:	Time:
A. Name of Complainant:		Phone #:
Address:		
Name of Person Being Reported if Any:		
Other Persons Involved if Any:		
B. Description of Incident/Complaint:		
C. Complaint/Incident Location (general):		
Property Owner/Leaser:		
Land Status:		
D. Type of Waste:		
Waste Source:		
Waste Amount/Volume:		
E. When Incident Occurred:		
Date:	Time:	
F. How Was Waste Disposed or Released:		

Vehicle Identification (License #, Make, Model, Color):

Appendix C: Description Community Solid Waste Activities

Each year the NCT sponsors a community clean-up day. The following guidelines may be useful in planning the event based on previous experiences:

- Begin planning the event in January for implementation in the Spring.
- Identify an event Chair or two co-Chairs.
- Host first planning meeting and invite all programs including BIA, IHS, and other non-tribal program staff.
- From the first meeting, create a Community Clean-up Day Committee.
- Host monthly meetings leading up to the event, four weeks before the scheduled event, meet weekly.
- Identify the following:
 - o List of priority clean-up areas and assigned programs.
 - o Supplies needed for the event- gloves, bags, water, and food.
 - o Seek donations from local businesses, grant funded programs, community members, and others as available.
 - o Forecast the amount of waste to be collected and the tipping fees associated with the clean-up. Share information with the NC Council and Finance Office.
 - o Provide specific training about hazardous solid waste and biomedical wastes including sharps needles.
 - o Identify disposal options for hazardous and biomedical wastes.
 - o Promote clean-up in all communities on the Reservation.
 - o Encourage multi-community and program involvement.
 - o Provide recycling options during clean-up as available.
 - o Document the amount of SW collected and the amount of recycling as this information may be useful for demonstration/future grant applications.

Appendix D: Solid Waste Management Online Training Resources

Environmental Management Systems Online, available at:

<http://www.epa.gov/epawaste/inforesources/ems/ems-101/index.htm>

RCRA Training Modules, available at:

<http://www.epa.gov/epawaste/inforesources/pubs/hotline/rmods.htm>

Training and Technical Assistance, EPA Manual, available at:

<http://www.epa.gov/wastes/wyacd/tribal/pdfxt/training.pdf>

General Solid Waste Training, available at: <http://www.trainex.org/>

Alaska Forum, Inc. Solid Waste Training (Alaska) - <http://www.akforum.com/training.html>

Alaska Native Tribal Health Consortium Planning Guide, Template and Training (Alaska) -

<http://www.anthc.org/cs/dehe/sustops/swm/>

Indian Health Service Environmental Health Support Center Training - <http://www.ehsc.ihs.gov/>

Institute for Tribal Environmental Professionals Training - <http://www4.nau.edu/itep/trainings/>

Tribal Solid Waste Advisory Network Training and Template - <http://www.tswan.org>

Yukon River Inter-Tribal Watershed Council Backhaul and Hazardous Waste Training -

<http://www.yritwc.org/Departments/Backhaul/tabid/62/Default.aspx>

Zender Environmental Health and Research Group Template and Training (Alaska) -

<http://www.zendergroup.org/plan.htm>

**Appendix E: List of Known and Suspected Open Dumps on the Reservation
Lame Deer**

FACILITY/ SITE NAME	COMMUNITY	COUNTY	SIZE [ACRES]	CONDITION AND STATUS	DATE DOCUMENTED	CONTENTS	KNOWN/POSSIBLE CONTAMINANT
Lame Deer Strip Mine-Old Burns	Lame Deer	Rosebud		Abandoned Mines	9/17/2010	Mine Scarred Land	Mining Residual
Soldier Gulch Strip Mine	Lame Deer	Rosebud		Abandoned Mines	9/17/2010	Mine Scarred Land	Mining Residual
LAME DEER CANISTER SITE	Lame Deer	Rosebud	1.53	Un-Active Transfer Station			Ld, UO, Other Unknown
SWEET MEDICINE	Lame Deer	Rosebud	0.5	Cleaned Up Nice			Ld, UO, Other Unknown
SOLDIER GULCH DUMP SITE	Lame Deer	Rosebud	0.4	Cleaned Up-Still Active	1/13/2009	Used To Dump Animal Carcass	Ld, UO, Other Unknown
Old Lame Deer Dumps-Near Casino	Lame Deer	Rosebud		Superfund-Cleaned-Active		MSW (A &B), ST, WG,	Ld, UO, Other Unknown
Lame Deer High School Dumps	Lame Deer	Rosebud			5/18/2010	MSW (A &B), ST, WG, CD	Ld, UO, Other Unknown
Lame Deer/ HIS Housing	Lame Deer		0.11	Active Open Dump		Need To Speak W/ Some One From The School Regarding Activity; Need To File A Complaint W/ The State It Is On Fee Land	Ld, UO, Other Unknown
Trusler-Morning Star-Garage	Lame Deer	Rosebud	2	Abandoned Lub Station	8/26/2010	Construction Debris	Ld, UO, Other Unknown
Trusler-Morning Star-Office Space And Other Storage	Lame Deer	Rosebud	5	Open Dump	8/26/2010	Construction Debris, Unknown 55 Gallon Barrels	Ld, UO, Other Unknown
Beckman's Junk Yard							
The Lube Center							

**Appendix E: List of Known and Suspected Open Dumps on the Reservation
Lame Deer**

FACILITY/ SITE NAME	COMMUNITY	COUNTY	SIZE [ACRES]	CONDITION AND STATUS	DATE DOCUMENTED	CONTENTS	KNOWN/POSSIBLE CONTAMINANT
Sanchez Tire Site	Lame Deer	Rosebud		Tire Dump	4/23/2009	Special Waste-ST	UO, Vermin Attractor, Risk Mosquito Infestation, Fire Hazard
Two Two Site	Lame Deer	Big Horn	0.5	Tire Dump	4/23/2009	M And Special Waste (A&B)-AT, WG, CD, Electronics, MSW, ST	UO, Vermin Attractor, Risk Mosquito Infestation, Fire Hazard
Black's Saw Mill	Lame Deer	Rosebud	5			Need To Investigate To Verify Debris	
Abandoned Cars-Near Black Saw Mill	Lame Deer	Rosebud	1	Abandoned Autos	6/1/2010	Special Waste-ST, AV	UO, Vermin Attractor, Risk Mosquito Infestation, Fire Hazard
Yellow Fox Tire Site	Lame Deer	Rosebud	1	Tire Dump	8/27/2010	Special Waste-ST	UO, Vermin Attractor, Risk Mosquito Infestation, Fire Hazard
Jimmy Peppers-Junk Cars-Tire Site	Lame Deer	Rosebud	5	Open Dump	6/1/2010	Special Waste-AV, ST, UO	UO, Vermin Attractor
Lame Deer Creek/ Cars/Debris	LD Creek	Rosebud				Special Waste, AA	Ld, UO, Other Unknown, Vermin Attractor
Lame Deer Creek Debris Under The Bridge	LD Creek	Rosebud					
Cady's Gas Station-Burnt	Lame Deer	Rosebud			Apr-10	Tanks Have Been Removed-Plum Remains On Gw-Burnt Via Arson-Now An Asbestos Contaminated Site	Asbestos, Gasoline, Diesel
Our Station Gas Station/Gas And Garage	Lame Deer	Rosebud		Abandoned Gas Station	4/1/2010	Gas Tanks Removed-Plume Remains On Top Of Ground Water	Asbestos, Gasoline, Diesel

**Appendix E: List of Known and Suspected Open Dumps on the Reservation
Lame Deer**

FACILITY/ SITE NAME	COMMUNITY	COUNTY	SIZE [ACRES]	CONDITION AND STATUS	DATE DOCUMENTED	CONTENTS	KNOWN/POSSIBLE CONTAMINANT
Out Station Café-Lube	Lame Deer	Rosebud		Abandoned Lube Station	Apr-10	Previous Lube Station- See Pictures	Asbestos, Gasoline, Diesel
Old Fox Gas Station-Name Varies	Lame Deer	Rosebud	2.5		Apr-10	June(Isabella) Spangs (Married To Terry Spang Sr.) Mother And Father Used To Own The Place- Not Sure If Tanks Have Been Removed	Asbestos, Gasoline, Diesel
Asbestos Lame Deer Cemetery	Lame Deer	Rosebud		Non Asbestos Containing	Apr-10	Special Waste-Asbestos Containing Material	Asbestos
Asbestos Shoulder Blade Complex	Lame Deer	Rosebud		Cleaned/Remediated	Apr-10	Special Waste-Asbestos Containing Material	Asbestos
Asbestos Utilities Commission	Lame Deer	Rosebud		Open Dump	Apr-10	Special Waste-Asbestos Containing Material	Asbestos
Asbestos-Abandoned Home-Pink Next To Jail	Lame Deer	Rosebud		Open Dump	Jun-10	Special Waste-Asbestos Containing Material	Asbestos
Abandoned Home-Rodeo Grounds	Lame Deer	Big Horn		Open Dump	8/26/2010	Special Waste-AH, ST, AA, V	Asbestos
Abandoned Home-West Site-Old Log Shack	Lame Deer	Rosebud	0.75	Open Dumping	9/17/2010	Special Waste-AH-	Possible Asbestos
Abandoned Lot-West Side-Old Headstart Classroom	Lame Deer	Rosebud	1.5	Open Dump	9/17/2010	Special Waste-AH-MSW-ST-AA, V	Asbestos
Abandoned Lot-West Side-Red House & Brown Trailer	Lame Deer	Rosebud	1.5	Open Dump	9/17/2010	Special Waste-AH-MSW-ST-	Asbestos

**Appendix E: List of Known and Suspected Open Dumps on the Reservation
Lame Deer**

FACILITY/ SITE NAME	COMMUNITY	COUNTY	SIZE [ACRES]	CONDITION AND STATUS	DATE DOCUMENTED	CONTENTS	KNOWN/POSSIBLE CONTAMINANT
Abandoned House-Burnt-East Side-Next To Alicia's Old House	Lame Deer	Rosebud	1.5	Open Dump	9/17/2010	Special Waste-AH-Asbestos Contained Air Borne Debris, V	Asbestos
Abandoned Home-East Side-Next Mabel Small	Lame Deer	Rosebud	2	Open Dump	9/17/2010	Special Waste-Burnt AH, Possible Asbestos Containing Material, WG, MSW, Piles Of Combustible Material	Asbestos
Abandoned House-Red -	Lame Deer	Rosebud	1.5	Open Dump	9/17/2010	Special Waste-AH, V, AA, WG	Asbestos
Abandoned Home-West Side	Lame Deer	Rosebud	0.5	Open Dump	9/17/2010	Special Waste-AH, V, WG	Asbestos
Abandoned Head Start Building	Lame Deer	Rosebud	1.5	Open Dump	9/17/2010	Special Waste-AH, V, WG	Asbestos
Abandoned Home-Green- Old Burns Mine	Lame Deer	Rosebud	2	Open Dump	9/17/2010	Special Waste-AH, V, WG, AA	As
Abandoned Home-Red-Next Jennie Lou	Lame Deer	Rosebud	2	Open Dump	9/17/2010	Special Waste-AH, V, WG, AA, Possible Friable Asbestos Exposed	Asbestos
Abandoned Red House-Next To Knowshisguns	Lame Deer	Rosebud	2	Open Dump-Asbestos	9/17/2010	Asbestos, WG	
The Homeless Shelter	Lame Deer	Rosebud	2	Open Dump-Asbestos	5/18/2010		
Abandoned Home-Across 212 From Philip Whiteman Jr.	Lame Deer	Rosebud	2	Open	9/17/2010		
Dead Fred's	Lame Deer	Rosebud	2	Open Dump	9/17/2010	Special Waste-Formelds Hyde Confirmed In Water Sample Down Stream	

**Appendix E: List of Known and Suspected Open Dumps on the Reservation
Busby**

FACILITY/ SITE NAME	COMMUNITY	COUNTY	SIZE [ACRES]	CONDITION AND STATUS	DATE DOCUMENTED	CONTENTS	KNOWN/POSSIBLE CONTAMINANT
Midway Strip Mine-Rosebud Subdivision	Busby	Big Horn	15	Abandoned Mines	9/17/2010	Mine Scarred Land	Mining Residual
TWO MOONS DUMP SITE	Busby	Big Horn	2	Cleaned Up	1/13/2009	Needs A Sign	Ld, UO, Other Unknown
Smalls Line Camp Dump	Busby	Big Horn	0.11	Open Dump-Surface	1/13/2009	MSW (A And B), Wag's, CD, MSW, ST	Ld, UO, Other Unknown
Busby Dumps-Canister Site	Busby	Big Horn		Active Transfer Station			Ld, UO, Other Unknown
Older Busby Dumps-3/4 Mi Past	Busby	Big Horn		Cleaned Up		MSW	Ld, UO, Other Unknown
Construction Debris-East Of Busby-N 212	Busby	Big Horn					
Huff Tire Site	Busby	Big Horn		Tire Dump	4/24/2009	Special Waste-ST	UO, Vermin Attracter, Risk Mosquito Infestation, Fire Hazard
Dan Wilson Tire Site	?	Big Horn		Tire Dump	4/24/2009	Special Waste-ST	UO, Vermin Attracter, Risk Mosquito Infestation, Fire Hazard
Yellow Fox Tire Site	Lame Deer	Rosebud	1	Tire Dump	8/27/2010	Special Waste-ST	UO, Vermin Attracter, Risk Mosquito Infestation, Fire Hazard
Dave Morisson Towing And Junk Yard	Busby	Big Horn		Active Needs Permit	8/6/2010	MSW And Special, MSW, AT, AA, AH, MSW, St, Unknown Containers,	Ld, UO, Other Unknown
Tipi Station	Busby	Big Horn			8/6/2010		Old Gas Station
Abandoned Home-Lois King Fisher	Busby	Big Horn	1.25	Open Dump	8/6/2010	Special Waste-AH, V	Asbestos

**Appendix E: List of Known and Suspected Open Dumps on the Reservation
Busby**

FACILITY/ SITE NAME	COMMUNITY	COUNTY	SIZE [ACRES]	CONDITION AND STATUS	DATE DOCUMENTED	CONTENTS	KNOWN/POSSIBLE CONTAMINANT
Abandoned Home-Green And White	Busby	Big Horn	1.25	Open Dump	8/6/2010	Special Waste- AH, V	Asbestos
Abandoned Home-Block 17 Lot 14-Red	Busby	Big Horn	1.25	Open Dump	8/6/2010	Special Waste-	Asbestos
Abandoned Lot -Red Home-Jackie Tang	Busby	Big Horn	3	Open Dump	8/6/2010	Special Waste-	Asbestos
Abandoned Lot-Blue Home-Jackie Tang	Busby	Big Horn	3	Open Dump	8/6/2010	Special Waste-	Asbestos
Abandoned Lot-Foundation-Jackie Tang	Busby	Big Horn	3	Open Dump	8/6/2010	Special Waste-AH	Asbestos
Abandoned Home-Clarice Tall Bull-Peach Color	Busby	Big Horn	1.25	Open Dump	8/6/2010	Special Waste-	Asbestos
Abandoned Home-Mod Fightingbear-Blue	Busby	Big Horn	1.25	Open Dump	8/6/2010	Special Waste-	Asbestos
Abandoned Home-Mod Fightingbear-Grey	Busby	Big Horn	1.25	Open Dump	8/6/2010	Special Waste-	Asbestos
Abandoned Home-Lenora Wolfname-Brown	Near Busby	Big Horn	2.5	Open Dump	8/6/2010	Special Waste-	Asbestos
Abandoned Home-Lenora Wolfname-Green	Near Busby	Big Horn	2.5	Open Dump	8/6/2010	Special Waste-	Asbestos
Abandoned Home-Charette-Tan-Silo	Near Busby	Big Horn	2.5	Open Dump	8/6/2010	Special Waste-	Asbestos
DNP Trading UST Lustgas Station	Busby	Big Horn	3	Ust/Lust Site Arra Funded		Currently Being Cleaned Up By The State-Vaporizing The Gasoline On GW Table	

**Appendix E: List of Known and Suspected Open Dumps on the Reservation
Busby**

FACILITY/ SITE NAME	COMMUNITY	COUNTY	SIZE [ACRES]	CONDITION AND STATUS	DATE DOCUMENTED	CONTENTS	KNOWN/POSSIBLE CONTAMINANT
MTDOT STATION	Busby	Big Horn	4	Previous Farmed Bf		Special Waste-Previously Farmed-Used Oil Spread Out Across An Area	
Meth Site-Ralph Small	Busby	Big Horn	10		12/21/2010	Meth Contaminated Site	Removed By Unknown Agency-Entire Home Has Been Removed

**Appendix E: List of Known and Suspected Open Dumps on the Reservation
Birney**

FACILITY/ SITE NAME	COMMUNITY	COUNTY	SIZE [ACRES]	CONDITION AND STATUS	DATE DOCUMENTED	CONTENTS	KNOWN/POSSIBLE CONTAMINANT
Birney Canister Site	Birney	Rosebud	0.5	Active Transfer Station			Ld, UO, Other Unknown
Clinton Small	Birney		0.35	Cleaned Up Nice			Ld, UO, Other Unknown
Ashland Flats	Ashland		3.01	Cleaned Up Nice			Ld, UO, Other Unknown
Lower Tipi Ranch-Farm Equipment, Barn, Silo, Etc	Birney	Rosebud	80	Abandoned Farm		Special Waste, Abandoned Farm Equipment, Silos, Barn, (2) Houses	Pesticides, Herbicides, Possible Asbestos Containing House/Structure
Upper Tipi Ranch-Fishing Recreation Area	Birney	Rosebud	70		6/1/2010	Septic, MSW, ST,	
Tongue Rive Cars/ Debris	Tongue River	Rosebud			6/1/2010		Ld, UO, Other Unknown

**Appendix E: List of Known and Suspected Open Dumps on the Reservation
Ashland**

FACILITY/ SITE NAME	COMMUNITY	COUNTY	SIZE [ACRES]	CONDITION AND STATUS	DATE DOCUMENTED	CONTENTS	KNOWN/POSSIBLE CONTAMINANT
Saw Mill-Asbestos-Hazardous Waste	Ashland	Rosebud	30	Open Dump Site	04/24/2009	MS, Special And Hazardous Waste(A, B And C), ST, WG, CD, Drums/Unknown Containers, Pesticides, Solvents, Corrosives	Corrosives, Caustic Soda, Lead From Old Car And Truck Batteries, Solvents, Diesel Fuel, Other Unknown
Sawmill Tire Site	Ashland	Rosebud	0.5	Tire Dump	04/24/2009	MS, Special And Hazardous Waste(A, B And C), ST, WG, CD, Drums/Unknown Containers, Pesticides, Solvents, Corrosives	UO, Vermin Attracter, Risk Mosquito Infestation, Fire Hazard
Robinson Tire Site And Used Oil	Ashland Flats	Rosebud	3	Tire Dump	04/23/2009	MSW And Special Waste (A And B), AA, CD, MSW, USED OIL FILTERS	UO, Vermin Attracter, Risk Mosquito Infestation, Fire Hazard
Robinson Truck Stop And Tire Site	Ashland Flats	Rosebud	3	Tire Dump	04/23/2009	MSW And Special Waste (A And B), AA, CD, MSW, USED OIL FILTERS	UO, Vermin Attracter, Risk Mosquito Infestation, Fire Hazard
FOX OPEN DUMP SITE	Ashland	Rosebud	0.75	Cleaned Up But Not Well	01/13/2009	Needs A Sign Posted And Needs To Be Cleaned Up Better	Ld, UO, Other Unknown
Old Busby Dump	Ashland Flats	Big Horn	0.6	Open Dump	01/13/2009	MSW And Special Waste (A And B), AA, WG, CD, MSW	Ld, UO, Other Unknown
Jenny Parker Dump Site	Ashland Flats	Rosebud	2	Open Dump	04/23/2009	MSW AND SW(A &B),ST	Ld, UO, Other Unknown
White Dirt Dump Site	Muddy Creek	Big Horn	0.5	Open Dump	04/23/2009	MSW, WG, CD, FURNITURE ,ST	Ld, UO, Other Unknown
Hamilton Tire Site	? Need To Verify	Rosebud		Tire Dump		SPECIAL WASTE-ST	Ld, UO, Other Unknown
Walking Horse Creek	Ashland						Ld, UO, Other Unknown
Rabbit Town	Ashland		0.16	Cleaned Up Nice			Ld, UO, Other Unknown

**Appendix E: List of Known and Suspected Open Dumps on the Reservation
Ashland**

FACILITY/ SITE NAME	COMMUNITY	COUNTY	SIZE [ACRES]	CONDITION AND STATUS	DATE DOCUMENTED	CONTENTS	KNOWN/POSSIBLE CONTAMINANT
Ashland Flats	Ashland		3.01	Cleaned Up Nice			Ld, UO, Other Unknown
Little Bird	Ashland		0.35	Cleaned Up Nice			Ld, UO, Other Unknown
St. Labre Gas Pumps	Ashland	Rosebud	0.5				
The "Old Factory"	Ashland	Rosebud		Abandoned Metal Forming	09/03/2010	Special Waste-Possibly Lean And Other Heavy Metals In The Ground	Heavy Metals, Possible Acid Use For Metal Forming And Plating Process
The Camps	Ashland	Rosebud	25	Abandoned Trailers, Open Dump	June-10	Special Waste-Possible Meth Lab Site,	Report Of Burnt Trailer Due To Cooking Meth
Abandoned Home & Trailer-Same Lot-Rabbit Town	Ashland	Rosebud		Abandoned Trailers, Open Dump	Jul-10	Special Waste-AH-AT	Possible Asbestos
Burnt Home-Rabbit Town	Ashland	Rosebud		Abandoned Trailers, Open Dump	Aug-10	Special Waste-AH-AT	Possible Asbestos
Abandoned Home & Trailer-Crn Of Cotton And Tongue River Rd-Rabbit Town	Ashland	Rosebud		Burnt Home	Nov-10	Special Waste-AH-AT	Possible Asbestos

**Appendix E: List of Known and Suspected Open Dumps on the Reservation
Muddy**

FACILITY/ SITE NAME	COMMUNITY	COUNTY	SIZE [ACRES]	CONDITION AND STATUS	DATE DOCUMENTED	CONTENTS	KNOWN/POSSIBLE CONTAMINANT
Harris Dump Site	Muddy Creek	Big Horn	3	Open Dump	4/23/2009	MSW, SPECIAL WASTE(A AND B), AA, AT, WG, CD	Ld, UO, Other Unknown
White Dirt Dump Site	Muddy Creek	Big Horn	0.5	Open Dump	4/23/2009	MSW, WG, CD, FURNITURE, ST	Ld, UO, Other Unknown
Hamilton Tire Site	Verify	Rosebud		Tire Dump		SPECIAL WASTE-ST	Ld, UO, Other Unknown
Dan Wilson Tire Site	Verify	Big Horn		Tire Dump	4/24/2009	SPECIAL WASTE-ST	UO, Vermin Attracter, Risk Mosquito Infestation, Fire Hazard
Clifford Limpy Tire Site	Verify	Big Horn		Tire Dump	4/24/2009	SPECIAL WASTE-ST	UO, Vermin Attracter, Risk Mosquito Infestation, Fire Hazard
Dennis Shoulder Blade Junk Yard-"The Yard"	Muddy Creek	Big Horn		Open Dump Activity Moved	8/26/2010	MSW AND SPECIAL, MSW, AT, AA, AH,	Ld, UO, Other Unknown
Muddy Creek Junk Yard-"The Yard-The New One"	Muddy Creek	Big Horn		Active/Needs Permit	8/26/2010	NEEDS A PERMIT AND NEEDS TO PUT UP BARRIERS- NEED TO MAKE A SITE VISIT	Ld, UO, Other Unknown
Muddy Creek Cars/ Debris	Muddy Creek	Big Horn					Ld, UO, Other Unknown
Sellage Junk Yard	Muddy	Big Horn		Active Junkyard Needs Permit	9/17/2010	SPECIAL WASTE-AA, WG, CD, UNKNOWN CONTAINERS- ABOVE GROUND TANK	Possible Meth Lab, UO, Vermin Attracter, Other Unknown, Diesel, Gasoline
Abandoned Lot-Sellage-Abandoned Home	Muddy	Big Horn	5	Open Dump	9/17/2010	SPECIAL WASTE-BURNT AH, POSSIBLE ASBESTOS CONTAINING MATERIAL, AA, WG, ABOVE GROUND TANK, UNKNOWN CONTAINERS	Meth, Asbestos, UO, Ld

**Appendix E: List of Known and Suspected Open Dumps on the Reservation
Muddy**

FACILITY/ SITE NAME	COMMUNITY	COUNTY	SIZE [ACRES]	CONDITION AND STATUS	DATE DOCUMENTED	CONTENTS	KNOWN/POSSIBLE CONTAMINANT
Roy Todd-Near D. Shoulder Blade Muddy Creek	Muddy Creek	Big Horn	1.25	Possible Meth Lab			

**Appendix E: List of Known and Suspected Open Dumps on the Reservation
Kirby**

FACILITY/ SITE NAME	COMMUNITY	COUNTY	SIZE [ACRES]	CONDITION AND STATUS	DATE DOCUMENTED	CONTENTS	KNOWN/POSSIBLE CONTAMINANT
Bixby 1 Dump Site	Kirby	Big Horn	0.25	Active Household Dump	8/11/2008		Ld, UO, Other Unknown
Bixby 2 Dump Site	KIRBY	Big Horn	0.25	Active Open Dump	8/11/2008		Ld, UO, Other Unknown
Bixby 2 Dumpsite	Kirby	Big Horn	0.25		4/23/2009		
Kirby Rosebud Creek Dump	KIRBY	Big Horn		Open Dump	6/9/2008		Ld, UO, Other Unknown
Melvin Small Dump	Kirby	Big Horn	2	Active	4/23/2009	MSW, Special And Hazardous Waste (A, B And C), WG, CD, Drums/ Unknown Containers, Pesticides	Ld, UO, Other Unknown
Hamilton Tire Site	? Verify	Rosebud		Tire Dump		SPECIAL WASTE-ST	Ld, UO, Other Unknown
Eva Small	Kirby	Big Horn		Active Open Dump	4/23/2009		Ld, UO, Other Unknown
Tractor Site	Kirby Creek	Big Horn					Ld, UO, Other Unknown
Alexander Site	Kirby	Big Horn					Ld, UO, Other Unknown
Zimmerman Tire Site	Kirby	Big Horn		Tire Dump		SPECIAL WASTE-ST	UO, Vermin Attractor, Risk Mosquito Infestation, Fire Hazard
Dan Wilson Tire Site	? Verify	Big Horn		Tire Dump	4/24/2009	Special Waste-ST	UO, Vermin Attractor, Risk Mosquito Infestation, Fire Hazard

**Appendix E: List of Known and Suspected Open Dumps on the Reservation
Kirby**

FACILITY/ SITE NAME	COMMUNITY	COUNTY	SIZE [ACRES]	CONDITION AND STATUS	DATE DOCUMENTED	CONTENTS	KNOWN/POSSIBLE CONTAMINANT
Clifford Limpy Tire Site	? Verify	Big Horn		Tire Dump	4/24/2009	Special Waste-ST	UO, Vermin Attracter, Risk Mosquito Infestation, Fire Hazard
Denise Shirley-Homesite Area	Kirby	Big Horn	1.25	Possible Meth Lab	6/1/2010	Special Waste-Burnt AH,	Possible Meth Lab Burnt On Adjacent Property Of Proposed Homesite
Roy Todd-Near D Shoulder Blade Muddy Creek	Muddy Creek	Big Horn	1.25	Possible Meth Lab	9/1/2010	Special Waste- Burnt AH,	Possible Meth Lab Burn And Was Abandoned Across The Muddy Creek

